

NOTE: ALL LINTELS/ BEAMS DEEPER THAN 140mm
TO HAVE DOUBLE STUD SUPPORTS

SPAN \leq 1100mm	70 x 45 F17 KDHW
1100 < SPAN \leq 1300mm	90 x 45 F17 KDHW
1300 < SPAN \leq 1500mm	120 x 45 F17 KDHW
1500 < SPAN \leq 1800mm	140 x 45 F17 KDHW
1800 < SPAN \leq 2100mm	190 x 35 F17 KDHW
2100 < SPAN \leq 2400mm	190 x 45 F17 KDHW
2400 < SPAN \leq 2700mm	240 x 45 F17 KDHW
2700 < SPAN \leq 3100mm	290 x 45 F17 KDHW

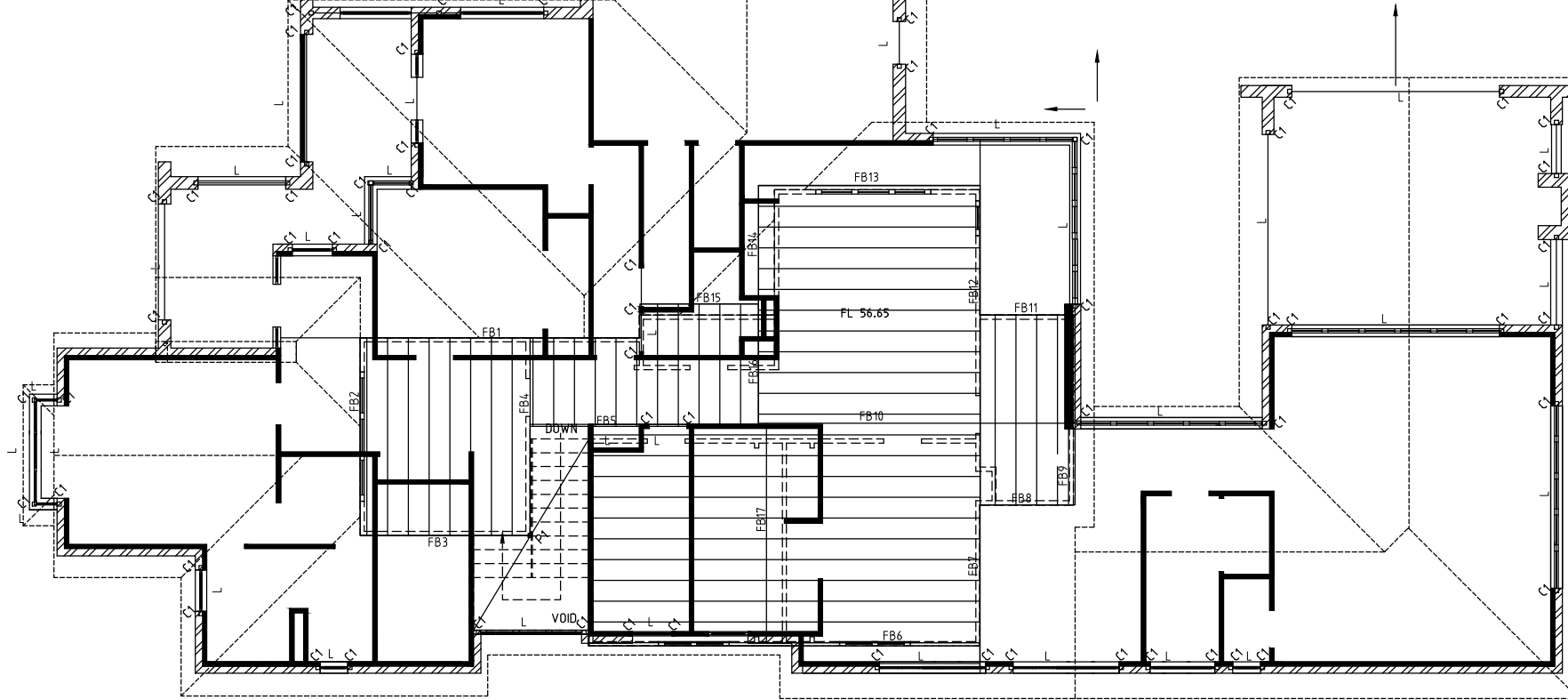
SPAN \leq 1400mm	2No. 90 \times 45 F17 KDHW
1400 $<$ SPAN \leq 1600mm	2No. 140 \times 35 F17 KDHW
1600 $<$ SPAN \leq 1900mm	2No. 140 \times 45 F17 KDHW
1900 $<$ SPAN \leq 2200mm	2No. 190 \times 45 F17 KDHW
2200 $<$ SPAN \leq 2400mm	2No. 240 \times 35 F17 KDHW
2400 $<$ SPAN \leq 2700mm	2No. 240 \times 45 F17 KDHW
2700 $<$ SPAN \leq 3100mm	2No. 290 \times 45 F17 KDHW

SPAN \leq 1800mm	100 x 100 x 6 EA	b
1800 < SPAN \leq 3000mm	150 x 100 x 10 UA	b

WALL FRAMING: ALL STUDS TO BE LOCATED AT A MAXIMUM OF 450 CRS. U.N.O.

FOR STUD WALLS IN STAIR VOIDS ADOPT
2No. 45 x 90 LVL15 @ 225 CRS. (5.8m HEIGHT)
PROVIDE 8 ROWS OF NOGGINGS
EQUALLY SPACED, M10 BOLTS @ 500 CRS MAX.

PROVIDE 2 ROWS OF NOGGINGS @ 1500 CRS.
BOTTOM PLATES TO BE 90 x 45 MGP10
TOP PLATES TO BE 90 x 70 MGP10

[illegible]

NOTE: ALL TIMBER BEAMS TO BE SUPPORTED ON 2No. 90 x 45 F17 KDHW DOUBLE STUDS U.N.O.
ALL STEEL BEAMS TO BE SUPPORTED ON 89 x 89 x 5.0 U.N.O.

NOTE: ALL TIMBER MEMBERS SCHEDULED 2No. or 3No. TO BE GLUED AND NAIL LAMINATED U.N.O.

SCALE - 1:100

A	XX.XX.11	PRELIMINARY ISSUE			TC
No.	Date	Revision			By

FIRST FLOOR FRAMING PLAN

—

—

—

CLIENT

PROJECT

Scale & A3 SIZE SHEET

Job No.
